

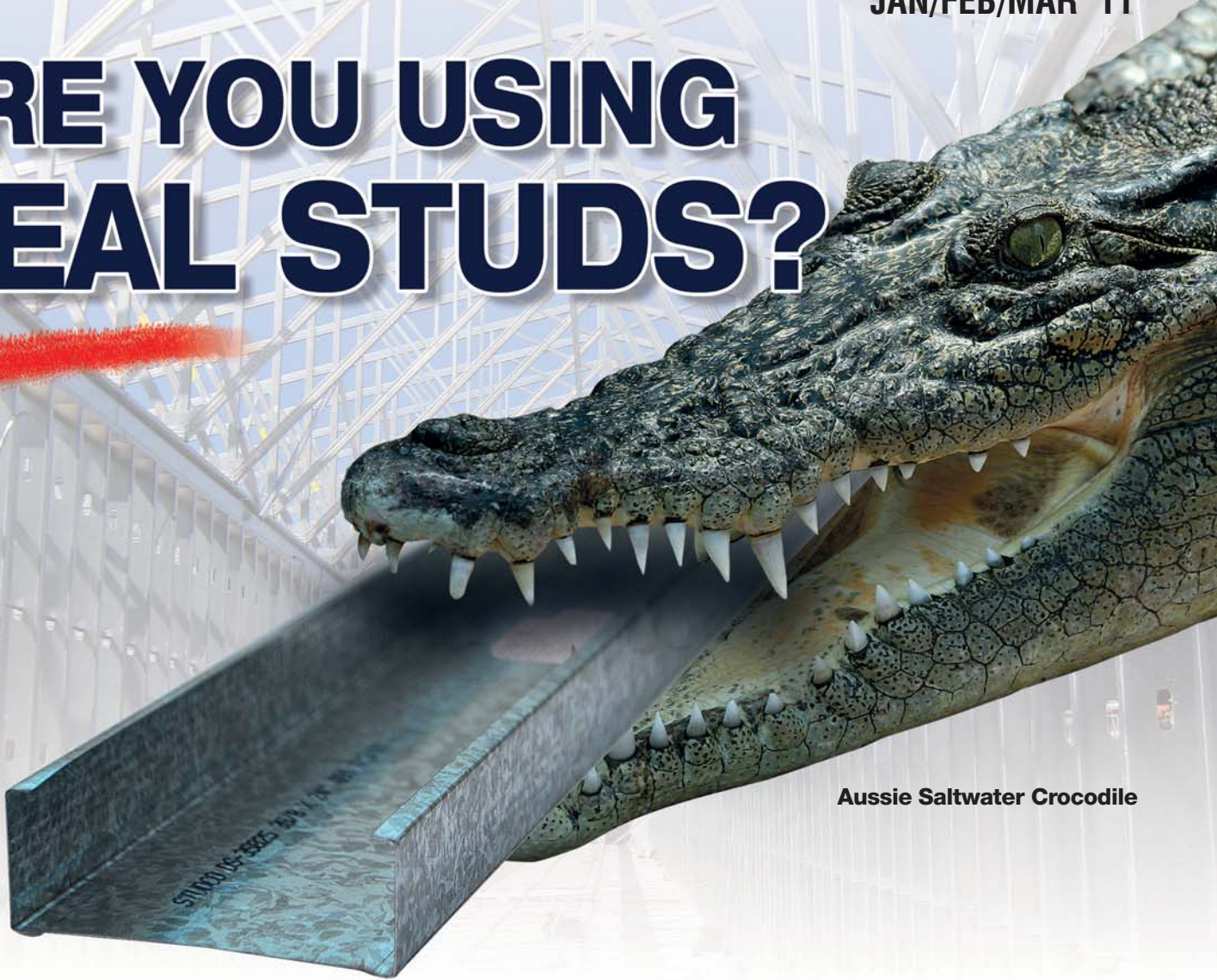
**STUDCO**  
BUILDING SYSTEMS

# THE **STUDCO** UPDATE

NEWS & UPDATES FROM STUDCO BUILDING SYSTEMS

JAN/FEB/MAR '11

## ARE YOU USING REAL STUDS?



Aussie Saltwater Crocodile

# ***DON'T GET BITTEN***

Forget the EQ – Put the “G U”  
back in your studs

***G*uaranteed *GenU*ine *GaU*ge**

50 KSI  
not  
33 KSI





# Studco's New Manufacturing Plant Now Operational

Studco USA is continuing to experience strong growth and we have just completed expanding our manufacturing facilities to accommodate greater production output.

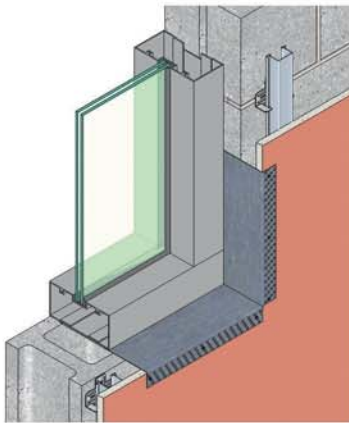
The brand new office and factory complex is home to one of America's most modern manufacturing operations of metal building systems. Studco with its increased capacity and range of innovative products will expanded into new markets to offer **Quality Products, Competitive Pricing and Exceptional Customer Service** to the North Eastern Markets.



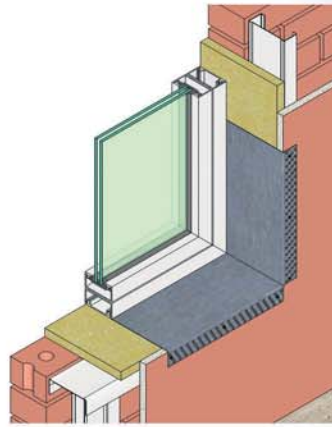
## Rapid Finishing With EZYreveal

Studco welcomes four new sizes to the EZYreveal family: RA60, RA75, RA80 and RA110.

Now in stock and ready for immediate despatch, these new sizes compliment the nine standard sizes of EZYreveal already produced by Studco. EZYreveal continues to be the market leader in window finishing sections, demanded by more and more developers, builders and drywall installers because of the clean lines, subtle tones and premium strength only offered by genuine EZYreveal. ■



EZYreveal is ideally suited to commercial window & shopfront applications



For domestic windows, slide the EZYreveal behind the window for a seamless finish

**EZY** reveal



Use with StudcoPFT19A PVC trim to create custom size reveals

Rapid finishing of window reveals & wall ends.

Tired of PVC reveals twisting, warping and cracking: EZYreveal is the only solution.

Rolled from quality Bluescope zinc-aluminium coated steel.

Reveal leg can be glued down or slid under glazing channel.

Use normal acrylic undercoat paint with EZYreveal – no additional preparation needed.

Specially formulated surface finish for seamless connection with plasterboard.



### Top 10 Features Genuine EZYreveal

- EZYreveal isn't susceptible to UV, direct sunlight & extreme temps.
- No warping, no twisting & no undulations with EZYreveal
- EZYreveal only uses half the amount of stopping compound
- EZYreveal is made in Australia & exported around the world
- You do not need to prime or prepare EZYreveal for painting
- EZYreveal is always in stock in 26 standard, popular sizes
- Thousands of homes & offices have EZYreveal clean line finish
- EZYreveal surface finish is classified as 'ultra-smooth'
- You can get EZYreveal in custom sizes & lengths\*
- EZYreveal achieves a 100% score in paintability

\* Lead times & minimum quantities may apply.

### EZYreveal STANDARD SIZES

Part No.	EZY REVEAL	
	Designed for Quick & Economical Finishing of Reveals from 13/16" to 6". Manufactured from Cold Rolled Steel providing a strong and secure Reveal, eliminating warping, twisting, cracking and damage from UV rays.	
RA20	13/16" (20mm)	20 Gauge Reveal Angle
RA25	1" (25mm)	20 Gauge Reveal Angle
RA35	1 3/8" (35mm)	20 Gauge Reveal Angle
RA50	2" (50mm)	20 Gauge Reveal Angle
RA60	2 3/8" (60mm)	20 Gauge Reveal Angle
RA65	2 9/16" (65mm)	20 Gauge Reveal Angle
RA75	2 15/16" (75mm)	20 Gauge Reveal Angle
RA80	3 1/8" (80mm)	20 Gauge Reveal Angle
RA90	3 9/16" (90mm)	20 Gauge Reveal Angle
RA100	4" (100mm)	20 Gauge Reveal Angle
RA110	4 5/16" (110mm)	20 Gauge Reveal Angle
RA120	4 3/4" (120mm)	20 Gauge Reveal Angle
RA138	5 7/16" (138mm)	20 Gauge Reveal Angle
RA150	6" (150mm)	20 Gauge Reveal Angle



## Have you got the Studco Catalog?



- New products
- 56 page, full colour catalogue
- New material sizes added
- Punched to suit your Studco binder

Contact  
Studco today  
to get your  
copy

### TECH TIPS

## STUDCO LGMF ENGINEERING SERVICES

Studco Building Systems can engineer the Light Gauge Metal Framing (LGMF) on your project.

We can provide a certified and stamped shop drawing quotation from project plans sent to us on email.

Studco LGMF Engineering Services can also value engineer your project to give the most cost efficient framing solutions which also enhances field performance and speed.

From large multi-storey, load bearing structures to simple wall loads we have you covered.

Call today or email your requirements or plans to: [sales@studcosystems.com](mailto:sales@studcosystems.com) for your needed solutions. ■

Need engineering assistance? Call Studco Technical Services on 800.675.8023 for fast, friendly advice.

